

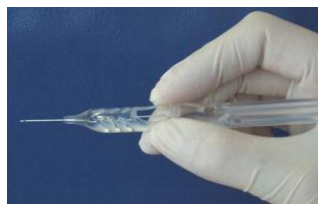
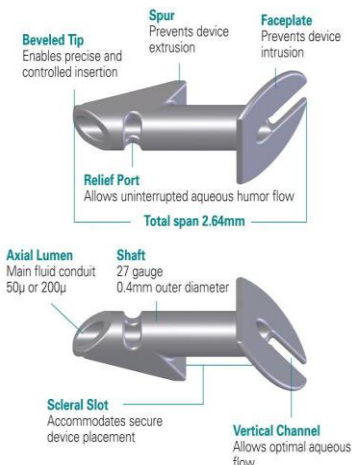
Improving Glaucoma Surgery

Glaucoma filtering surgery has been the gold standard of surgical glaucoma treatment for decades since it was made popular by Elliott in 1914. Over the years the procedure has been modified significantly. In 1968, Cairns introduced the trabeculectomy and promoted a guarded as opposed to a full-thickness procedure. Since then the introduction of anti-proliferative agents, the use of releasable sutures, and Laser suture lysis has made the procedure quite effective. We now know to apply the anti-proliferative agents more broadly and with new suturing techniques know how to close fornix-based conjunctival flaps water-tight.

Over the years different approaches to lower the intraocular pressure (IOP) have been developed, e.g. non-penetrating procedures (deep sclerectomy, viscocanalostomy, canaloplasty), drainage tube implants (Molteno, Baerveldt, Ahmed), Trabectome surgery, and the I-stent. They all have their place, but on average do not lower the IOP as well as can be achieved with the trabeculectomy.

A few years ago, the ExPress Shunt was brought to market. It makes glaucoma filtering safer, faster, and easier. The small shunt is inserted

into the anterior chamber angle underneath a trabeculectomy flap.



There is no need for a peripheral iridectomy. The shunt acts as a flow restrictor, however diligent closure of the scleral flap is still very important to prevent hypotony. Postoperatively a lot less inflammation can be noted and topical corticosteroids can be tapered more quickly as opposed to after traditional trabeculectomy. As with the trabeculectomy a filtering bleb develops and needs to be managed postoperatively. The ExPress shunt is not recommended in cases of uveitis or angle-closure glaucoma. It is made out of stainless steel and does not produce any tissue reaction. No problems have been seen with the device in MRI machines up to 3 Tesla.

By - Joern B. Soltau, MD

To schedule an appointment at the Kentucky Lions Eye Center, please call 502-852-5466

Providing the Highest Level of Care for your Patients

Eye Specialists of Louisville/University of Louisville Ophthalmology has been a center of excellence for clinical eye care, treating a broad range of eye disorders from pediatric eye diseases to age-related macular degeneration. As the largest multi-specialty team of ophthalmologists in Louisville, we are at the forefront of leading-edge treatments and research in subspecialties including Retina, Uveitis, Glaucoma, Oculoplastics, Pediatrics, Cornea, Neuro-Ophthalmology and Low Vision.

Office Locations:

Kentucky Lions Eye Center
University of Louisville
301 E. Muhammad Ali Blvd.
Louisville, KY 40202
Adult Clinic (502) 852-5466
Pediatric Clinic (502) 852-7818

The Springs Medical Center
6400 Dutchmans Parkway, Suite 310
Louisville, KY 40205
Adult and Pediatric
(502) 742-2848

Summit Office
9700 Park Plaza Avenue, Suite 110
Louisville, KY 40241
Pediatric Only (502) 852-7818

Meet the Doctors



ALI HAIDER, DO

*Cornea and
External Disease*



**WILLIAM NUNERY,
MD, FACS**

*Oculofacial Plastic
& Orbital Surgery*



CHARLES BARR, MD

*Retina, Vitreous
and Uveitis*



JUDITH MOHAY, MD

Glaucoma



RAHUL BHOLA, MD

*Pediatric Ophthalmology
& Adult Strabismus*



**HENRY KAPLAN,
MD, FACS**

*Retina, Vitreous
and Uveitis*



JOERN SOLTAU, MD

Glaucoma



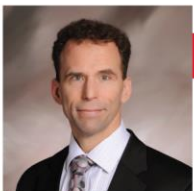
**GUADALUPE MEJIA,
OD, FAAO**

*Low Vision Specialist
& Optometry*



**SHLOMIT SCHAAL,
MD, PhD**

*Retina, Vitreous
and Uveitis*



KARL GOLNIK, MD

Neuro-Ophthalmology



**PATRICK SCOTT,
OD, PhD**

Optometry



TONGALP TEZEL, MD

*Retina, Vitreous
and Uveitis*